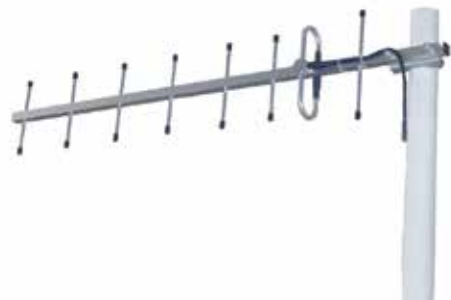


# True connect 746-896 YAGI Antenna



MODEL # YG/78/N

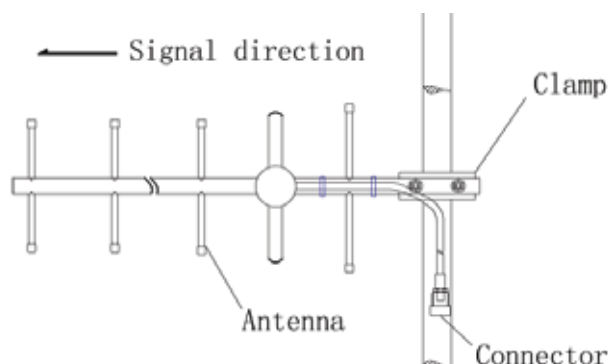


## FEATURES

Most mount yagi antenna that can be used as a donor antenna to supply signal for in-building DAS systems. The yagi has a rugged design and can withstand harsh environments. Can be used for either vertical or horizontal polarization.

Electrical Specifications	
Frequency Range (MHz)	746-896
Elements	8
Gain (dBi)	11.2
Horizontal Beam Width (°)	48
Vertical Beam Width (°)	40
Front to back ratio (dB)	≥19
VSWR	≤1.5
Maximum input power (W)	100
Impedance (Ω)	50

Mechanical Specifications	
Connector	N Female
Mounting Option	Pole Mount
Mounting Hardware Included	Pole Mount Bracket
Length in (mm)	33.47 (850)
Antenna weight - lb (kg)	0.88 (0.4)
Survival Wind Velocity m/ph (km/h)	135 (218)
Operating temperature - °F (°C)	-40≈140 (-40≈60)



[www.wirelessupply.com](http://www.wirelessupply.com)

© 2019 All rights reserved. Proprietary information. Wireless Supply reserves the right to modify or amend specifications without prior notice