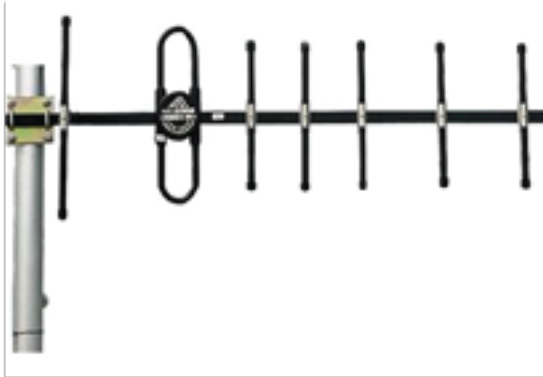


True connect UHF Yagi Antenna



MODEL # YG/UHF/N



FEATURES

- High performance yagi
- 20 MHz Bandwidth
- SCADA, UHF, Public Safety
- High wind survivability

Electrical Specifications	
Frequency Range (MHz)	450-470
Elements	7
Gain (dBi)	12
Horizontal Beam Width (°)	46
Vertical Beam Width (°)	42
Front to back ratio (dB)	≥19
VSWR	≤1.5
Maximum input power (W)	200
Impedance (Ω)	50

Mechanical Specifications	
Connector	N Female
Mounting Option	Pole Mount
Mounting Hardware Included	Pole Mount Bracket
Length in (mm)	42.91 (109)
Antenna weight - lb (kg)	4.19 (1.9)
Survival Wind Velocity m/ph (km/h)	150 (241)
Operating temperature - °F (°C)	-40≈140 (-40≈60)